

**WHERE:**

The Museum of Tolerance  
9786 W. Pico Blvd  
Los Angeles, CA 90035

*Registration Opens: November 1, 2016*



*Registration Closes: December 15, 2016 by 5:00 p.m.*

**NO late registrations or refunds will be processed after this date. NO EXCEPTIONS**

- ◆ **NOTE:** If you have multiple Homeschool students, each Homeschool student must be registered for all Field Trips using their own designated flex fund account. Any duplicate orders for the same field trip on one student's account will not be allowed.
- ◆ All students must be accompanied by a registered adult.

*Field Trip Photography Disclaimer:* "Please be advised that photographs will be taken at this event for use on the SCS website, marketing materials, and all other SCS publications. If you do not want you or your child to be photographed please advise the Field Trip Coordinator.

**WHEN:**

January 30, 2017  
Program start time: 10:00 am  
Program: Approx. 4.5 hours  
(30 minute lunch in between programs)

**COST:**

\$27.50 per Student  
\$24.50 per child guest  
\$24.50 per adult guest

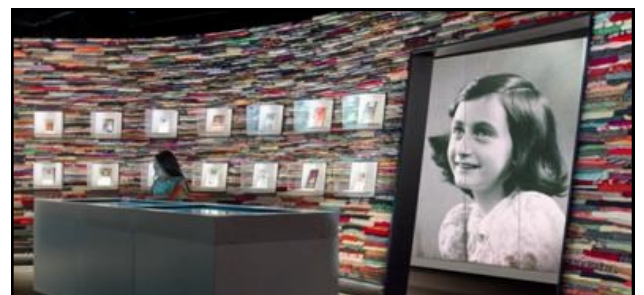
**PROGRAM INFORMATION**

The Museum of Tolerance encourages students to contemplate the effects of intolerance with interactive exhibits on the Holocaust as well as present day discrimination.



Witness history as you journey within a 3 hour guided tour of the Holocaust exhibit where students engage in state-of-the-exhibits that will inspire them to learn from the past, engage in the present, and assume responsibility for the future.

Experience the extraordinary "Anne" exhibit with unique artifacts, multimedia presentations and exciting interactive elements. Learn the details of Anne's life as you watch, listen and feel her innermost thoughts, fears, and hopes in an emotional 60 minute experiential filmic dramatization of her room in the Secret Annex.



**Special Guidelines:**

- ◆ Space is limited; first serve.
- ◆ No use of membership passes.
- ◆ Recommended for grades 7th - 12th. However, open to 4th and up.

**PARKING:**

\$ FREE  
(subject to change)



**KATHLEEN CRUDO**  
FIELD TRIP COORDINATOR  
www.springscharterschools.org  
43466 Business Park Drive  
Temecula, CA 92590  
Phone: (951) 252-8825  
Mobile: (951) 595-6360  
Fax: (951) 252-8801



Email all inquiries to [field.trips@springscs.org](mailto:field.trips@springscs.org)