



# Walking the Tightrope



## WHERE:

SEGERSTROM  
CENTER FOR THE ARTS  
SAMUELI THEATER  
South Coast Plaza  
600 Town Center Dr,  
Costa Mesa, CA 92626

## WHEN:

OCTOBER 13, 2016

PERFORMANCE START: 11:30 AM  
Length: approx. 1 hour

## COST:

\$10.00 STUDENT  
\$7.00 CHILD  
\$7.00 ADULT

### Special Guidelines:

- ◆ Space is limited; first serve.
- ◆ No use of membership passes.
- ◆ Recommended for grades 4th-7th; however, open to K-12th.
- ◆ No small children

## PARKING:

\$10.00  
(subject to change)

Registration Opens: August 1, 2016



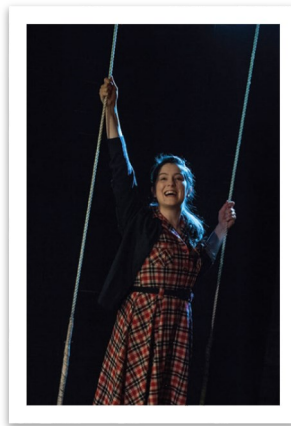
Registration Closes: September 15, 2016 by 5:00 p.m.

**NO late registrations or refunds will be processed after this date. NO EXCEPTIONS**

- ◆ **NOTE:** If you have multiple Homeschool students, each Homeschool student must be registered for all Field Trips using their own designated flex fund account. Any duplicate orders for the same field trip on one student's account will not be allowed.
- ◆ All students must be accompanied by a registered adult.

*Field Trip Photography Disclaimer:* "Please be advised that photographs will be taken at this event for use on the SCS website, marketing materials, and all other SCS publications. If you do not want you or your child to be photographed please advise the Field Trip Coordinator.

## PROGRAM INFORMATION



### WALKING THE TIGHTROPE

Written by Mike Kenny, one of England's leading writers for young audiences, WALKING THE TIGHTROPE is a sweet and funny story of a grandfather who, while trying to tell his five year-old granddaughter that Grandma is gone, goes about

building a beautiful new relationship with her. With the help of a single clown, they discover the true meaning of family. 24th Street Theatre's acclaimed production uses sophisticated video, sound design and original music to transport audiences from Grandad's quaint 1959 English seaside cottage to the spectacular circus big top.



**KATHLEEN CRUDO**  
FIELD TRIP COORDINATOR  
www.springscharterschools.org  
43466 Business Park Drive  
Temecula, CA 92590  
Phone: (951) 252-8825  
Mobile: (951) 595-6360  
Fax: (951) 252-8801



Email all inquiries to [field.trips@springscs.org](mailto:field.trips@springscs.org)

